

# EGYPT

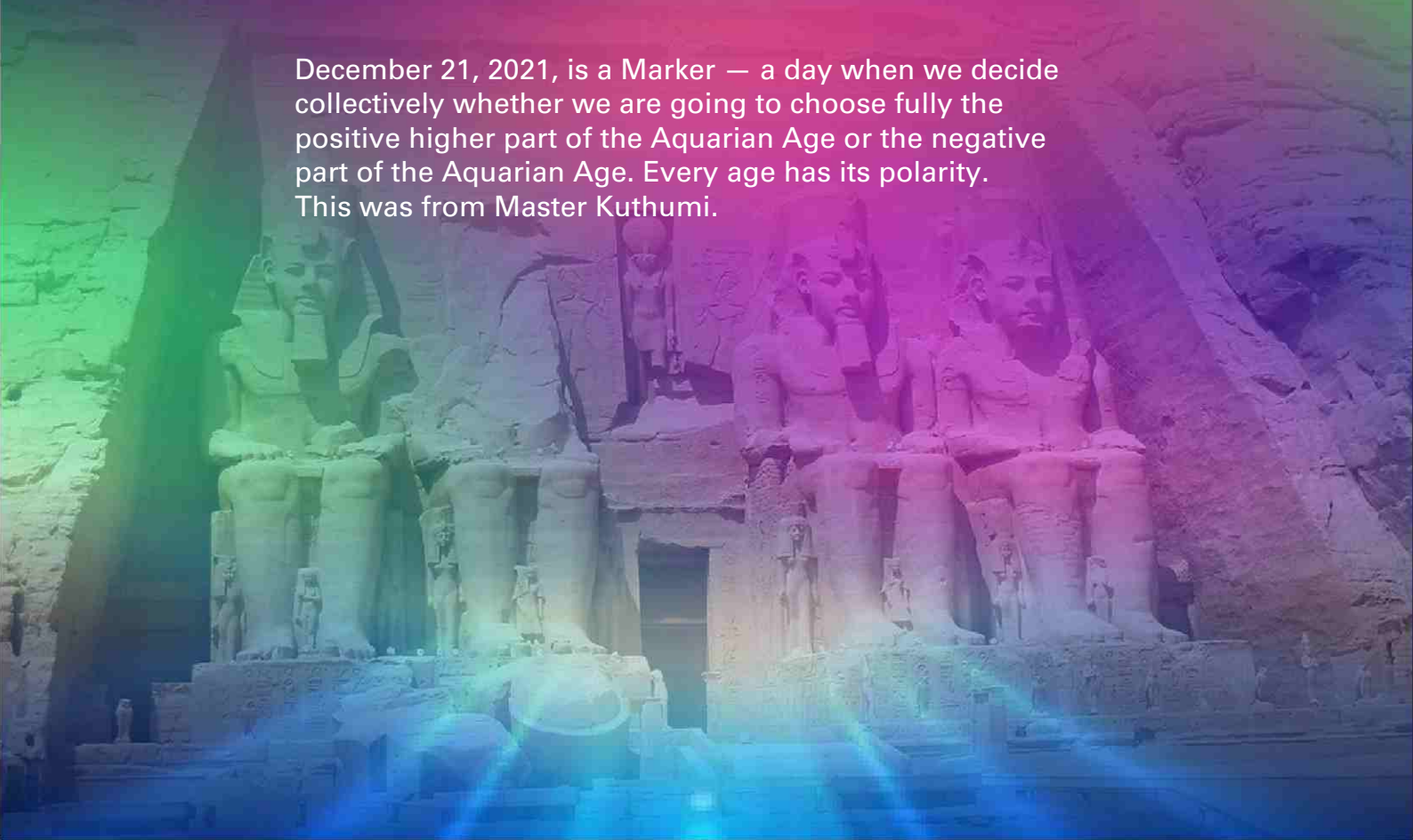
# VIRTUAL TOUR

With

Irhaan Ray Chandran

DECEMBER 2021

December 21, 2021, is a Marker — a day when we decide collectively whether we are going to choose fully the positive higher part of the Aquarian Age or the negative part of the Aquarian Age. Every age has its polarity. This was from Master Kuthumi.



# Messages from

## **THOTH ON MEDITATIONS WITH THE SYMBOLS**

**Dear Beloved Friends of Earth Transition and Light,**

These symbols are given to you so that you may prepare for the stronger energies which are forthcoming in the Egyptian Temples and attendant meditations within them which you will be experiencing. Each symbol, which you have been sent by Rae, contains the energies present in the actual temple you will visit. To prepare for your time there, it will be helpful to take each temple symbol and sit with one or more for 5 to 10 minutes each day.

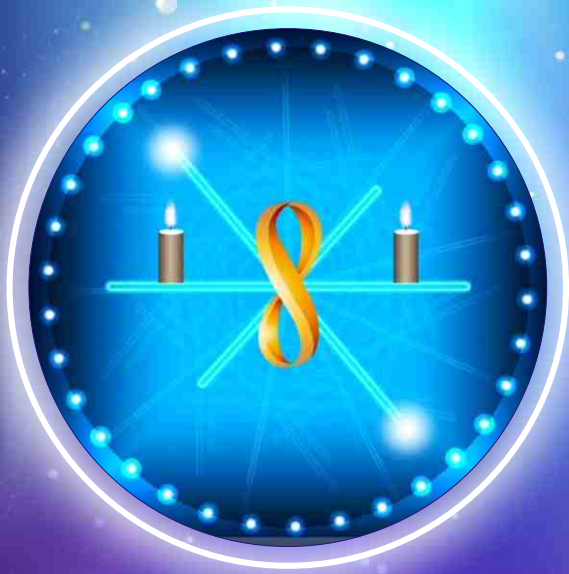
As you do so, breathe into your heart the energy of the pyramid or temple while you are looking at it. Close your eyes and breathe out. Return to this process 5 or 6 more times. Then take this vision into your 3rd eye and utilize your breath in the same manner as before, only now into your 3rd eye instead of your heart, but you need not open your eyes. As I said, 5 or 10 minutes for each one and you can repeat this cycle numerous times.

The temples vary in strength and energy. The same will be true for these symbols, and you receive varying wave lengths due to the colorations shown. Encodements exist within these symbols and colorations, so you will begin to feel the effects overall if used on a continual basis now, and they will open you to that which is possible later while sitting in meditation in Egypt.

Each temple or the pyramid or the Sphinx have some specific energies which will be enhanced using the symbols in this manner. In the meantime, this will begin a much greater opening for the Rainbow Bridge of Light between you and the given symbol you are working with or looking at during the next period of time before you arrive in Egypt.

At the same time, while building this Bridge, those aligned with the early temples of Light have specific priests and priestesses accompanying them, for they were, indeed, protected and contained great mysteries of Light providing Initiations for those who were ready. By invoking these energies and preparing now, each of you will benefit more highly once in the temple itself, and those so-called guardians of the Light will assist each in his or her practice and what can or will be undertaken once there.

I would also suggest each symbol be either carried with each participant once in the temple or to have one in the center of the room while you are meditating and receiving very specific energies. These symbols are powerful. Do not underestimate their effect and the preparation grid which is being set in place by using them.



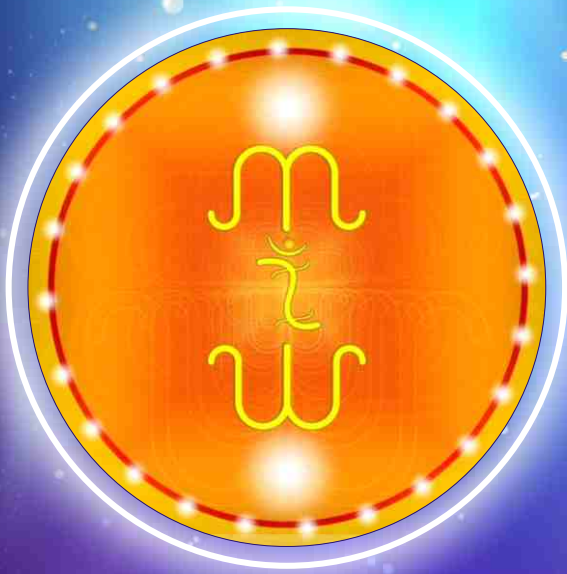
### **ABU SIMBEL :**

One brings into Light the balance of karma within this temple to understand what is completed, when one is ready to move ahead, and what has yet to be done. It is a realization of the state of readiness for further Initiations, for when this is completed, one begins the next level. However, until the completion of imbalances here are finished, the aspirant is held back for further training. It is an awakener to the higher levels of placement and work yet to be done or that which is finally finished.



### **ABYDOS :**

Contains the Rights of Passage to other realms and also contains the Resurrection Codes and Rejuvenation Codes



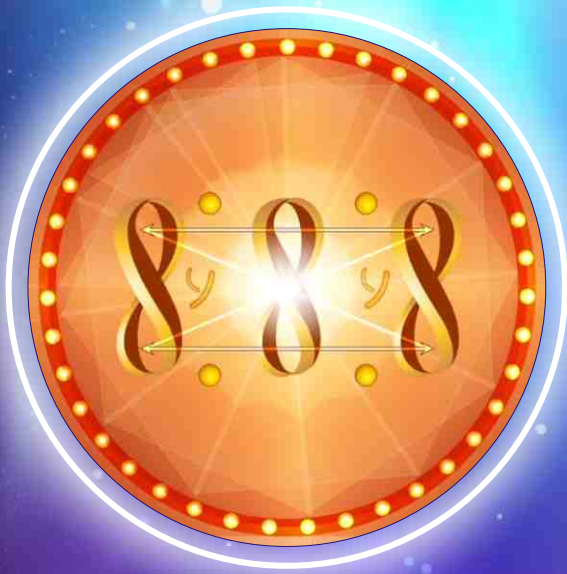
### **GREAT PYRAMID:**

As above, so below. All things are contained within the pyramid - all explanations of life - within the Universe - heavens and earth, yin/yang, dark/light, and the potential to rise above. The pyramid is an ascension chamber with the higher levels of reality present and those great tests overcoming fear creating levels of mastery when accomplished. The Law of One met.



### **HATHOR TEMPLE: aka DENDERA**

This temple provides the opportunity to align not only with the stars (11:11), but the entirety of one's soul presence on earth. It contains the light of all one is, not only in terms of the various array of expressions and combining them, but also the Twin Flame or Twin Soul combination alignment. The Hathors guard the Divine Feminine energy here and impart awareness and knowledge toward healing all aspects of body, mind and spirit.



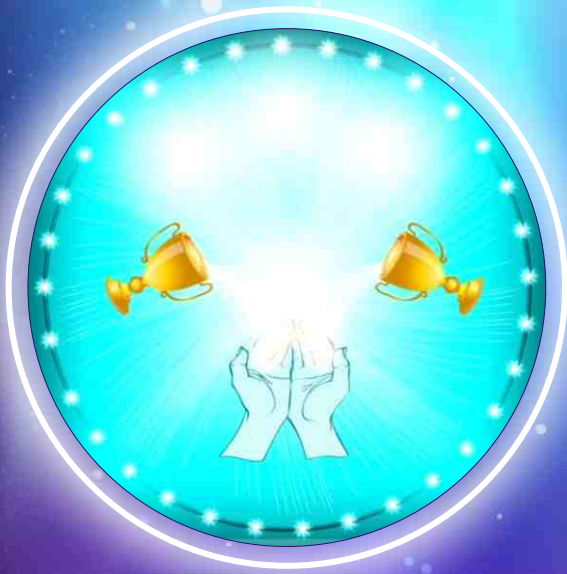
### **HORUS TEMPLE:**

Horus comes to the aspirant to awaken power within. This mighty temple is configured in such a manner that the energies seeded within are awakened to one's empowerment with instruction for right use. It does not guarantee this occurs, but the early teachings were solely about use of power and placement of same. To evoke Horus means you are ready to see your divine being take flight, with wisdom and strength, using life and life force with might.



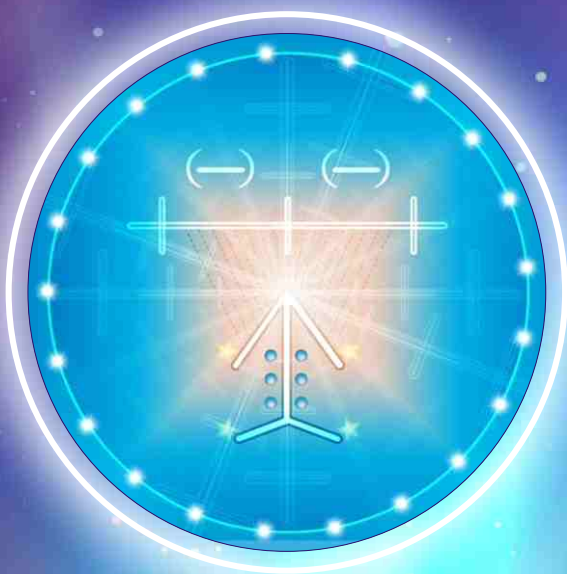
### **ISIS TEMPLE: PHILAE**

Herein lies the Divine Feminine represented by Isis. Imbued within these stone walls are the encodements for the Goddess energies to awaken and rebalance the world's energy. Isis has worked for eons of time to re-right the imbalances between Divine Masculine and Divine Feminine. Within this fertile grid comes the nurturance of life on earth into life as it once was and will be once again.



### **KARNAK TEMPLE:**

Elixir of Life poured into the hands of those reaching for the higher embracement of life. All who came here to study were given this elixir after they had reached a certain level of awareness. The gifts of this temple are enormous. Notice the colors of light and the upliftment possible provided to all with outstretched hands. As you sit in this temple you will notice the time has come for your own aspirations deep within your heart, to be met. You are seated here ascension day. The Grail Cup is providing the elixir of life.



### **KOM OMBO TEMPLE:**

The vastness of scope here evokes the inner mysteries within oneself that begin to awaken as one spends time in this space. The symbols help to start this process. The deeper inner worlds come alive with intensity here. A vast oasis for change and resolution within one's being and readiness for what is ahead.



### **LUXOR TEMPLE:**

Levels of consciousness heightened greatly in this temple, which serve to open one's being to the higher levels of reality. There are many aspects in this temple which rise to the placement of peaceful contentment in one's being through expansion of Light contained herein. This is the temple of commitment to the higher codes carried within one's being which can open with the vibration aligned along the great pillars outlining the enclosures and rooms of this temple. They begin to ignite one with proper quietude here and specific sounds can evoke this breakthrough. The colors here are those which elongate the system to embrace the community of man within them. Ascension chamber for some through meditation and clarity.



### **NILE RIVER:**

Beloved Nile River of all sustenance, creates a flow and design to all life, allowing for magnetic energies to traverse the planes where barely much exists. She, the Nile, seeks to restore balance to all areas of the Earth, and her great love of the land has provided life for all of gentle hearts and reflection, all possible within her constructs and lines. The Nile flows from South to North, expanding when able, to provide the greatest support to the land of Khem. Her love of mankind and all life exists everywhere she is. The Nile can be accessed in the symbol for one to understand the strength of spirit flowing within - that spirit providing life connecting all things and quenching one's thirst. This is the energy of Mother Earth while at the same time of spirit, combined as one, completing aspects within oneself toward wholeness of being. Ask for her presence among you, starting now, to restore the balance within your own being in all aspects.



### SPHINX:

This majestic presence can be evoked within oneself as a presence of Light and within that comes knowledge long sought. In your meditations, utilize this symbol to bring forth not only the greatness of this spirit but to evoke within yourself the passages of time now ready to be opened. The linkage of heart to heart most prevalent here. Align with your own majesty reflected here as well. The Sphinx also represents the alignment with the stars and oneness of all things contained with. For some, this energy is transcendent, moving one far beyond the Earth into another dimensional reality with little or no effort.

---

As you will note, perhaps in your meditations, the colors reflect special energies helpful to you as well. Each temple has a masculine or feminine aspect, and you will note them with meditation as well. And certain ones balance another, such as Isis Temple being the counterpart balance of Horus. The exception to this is Dendera, which contains the Divine Feminine and Divine Masculine balance within it as One.

Each temple, with varying energies and power, ultimately will express, as one passes through them the many teachings available, and an opportunity to incorporate fully the Law of One.

May your journey and practices be of joy and expansion toward the highest and best for each of you. I will meet with you in Egypt. All will be waiting.

This is **THOTH**, the Atlantean

